

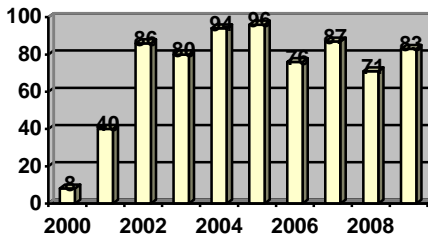
Free2B! Fact Sheet

“Providing Car Care to Enable Independence.”

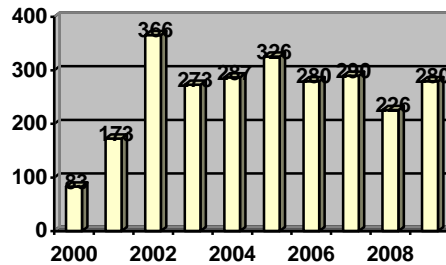


Free2B! is a non-profit 501c3 organization that accepts donated cars, repairs them and then donates them to eligible Anoka county residents to help them achieve economic security and self-sufficiency. Free2B! also repairs cars for eligible Anoka County residents using primarily volunteer's. The Free2B! Car Care Program includes components of repair or provides initial transportation for individuals in need.

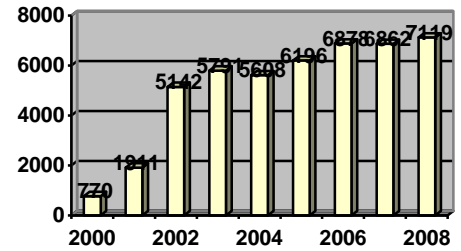
Cars Donated to Clients



Cars Repaired



Volunteer Hours



Board of Directors-2010

Executive Committee

President	Myles Engelstad, Faith Lutheran Church
Vice President	Robert Rozmarynowski
Secretary	Sandy Froiland, Anoka County Workforce Center
Treasurer	Al Sannerud, Sannerud, Savarese & Associates, P.A.
Past President	Joan Bednarczyk, St. Stephens Catholic Church

Staff

Cliff Korkowski, Executive Director

Directors

Christina Akinola	Anoka Hennepin Credit Union	Rich Krusemark	R2K Solutions, Inc
Jim Cormier	Building Sites Inc.	James Kugler	Terrace Park Agency
Barbara Doyle	Edina Realty	Gary Levine	Dunwoody Institute
Melissa Hortman	John's Auto Parts	Jeff Matt	Victory Auto Service and Glass
Jim Huff	Achieve	Ron Nordin	Mary T Inc.
Susan Jacobus	Park Nicollet	Sue Rosendahl	Salvation Army

Demographics (2009) – Based on 196 total Car Repair and Car Recipient clients

Cities Served	Gender	Ethnicity	Marital Status
Anoka 13%	Female 73%	White 67%	Single 55%
Andover 4%	Male 27%	African American 18%	Married 13%
Bethel 1%		Asian 1%	Divorced 17%
Blaine 18%		American Indian & White 5%	Widowed 4%
Cedar 1%		Asian & White 1%	Separated 10%
Centerville 0%		African American & White 5%	
Circle Pines 3%		Hispanic 2%	
Columbia Heights 7%		Other 1%	
Coon Rapids 25%			
East Bethel 2%			
Fridley 15%			
Ham Lake 1%			
Lexington 1%			
Lino Lakes 3%			
Oak Grove 0%			
Ramsey 3%			
Spring Lake Park 1%			
St. Francis 3%			
Wyoming 1%			
Other 2%			

Age	Public Assistance
21 to 22 4%	Child Support 4%
23 to 54 83%	DWP 2%
55 to 64 8%	Food Stamps 16%
65 to 74 5%	MFIP 24%
75 to 84 1%	MA 7%
85 + 0%	RSDI 4%
	SSDI 5%
	SSI 7%
	GA 1%
	Unemployment 5%

76% on some form of public assistance